

Waves  Guide

VILAMOURA

Issue number 4 - 2015

Getting Around
Vilamoura Life
Golf Focus
Bars and Restaurants
Property Focus
and more...

**FREE MAP
VOUCHERS**





WELCOME TO VILAMOURA

Whether this is your first time here or you are one on the thousands that visit us frequently, I am positive we can all agree that this year is going to be a great year for Vilamoura.

Vilamoura is continuing to shine and started 2015 in amazing fashion winning the International Marina of The Year award. The award, issued by The Yacht Harbour Association was voted for by over 3000 marina users and is a testament to Vilamoura Marina's commitment to build on a solid 40 year foundation.

So, call me biased, but we have the best golf facilities, the best beaches and now officially the best marina. This in addition to Inframoura's commitment to improve the infrastructure and leisure facilities in Vilamoura makes it the best place to be. Enjoy your stay and I am sure we will see you again soon!

River Adams

HELP US TO HELP YOU

As always thank you for the precious feedback following the previous editions. We are always very grateful and in many ways dependant on your input to make the guide functional for future tourists to Vilamoura. If you feel something is missing or could be improved, please drop me an email at myideas@waves.pt

MANY THANKS TO THE FOLLOWING CONTRIBUTORS

- Inframoura | Marina de Vilamoura
- Oceânico | DCPhotography
- Webflow.co | Travel4golf

- 4 GETTING AROUND
- 8 GOLF FOCUS
- 16 BEACHES
- 18 WATER WORLD
- 20 VILAMOURA LIFE
- 24 THE SECRET GARDEN
- 26 DAY & NIGHT
- 30 PROPERTY FOCUS
- 34 VILAMOURA MAP
- 36 DISCOUNT VOUCHERS
- 38 ESSENTIALS

Produced by
Waves Passion Charters, Lda
licensed tour operator

TURISMO DE
PORTUGAL



License N.º 99/2013
All rights reserved.
E-mail: info@waves.pt
Tel.: +351 910 109 089

19th Hole

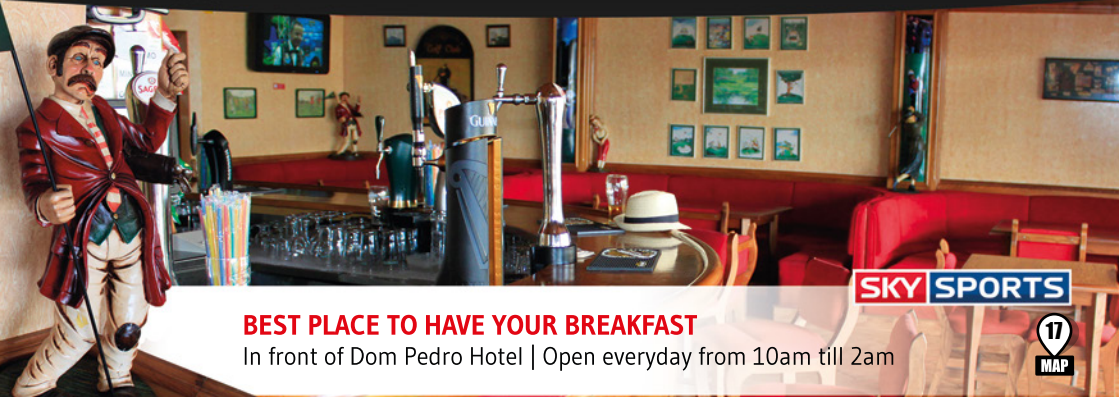
"The 19th Hole has been a landmark on Vilamoura Marina for years!"

Visit early and enjoy all sports live with some top quality "Pub Grub" then come back later prepared to party hard. Famous for its wild party atmosphere with Karaoke for the brave and some of the best bands in the Algarve, the 19th Hole is simply "THE" place to be.

Located just in front of the Tivoli Marina Hotel.
Open everyday from 10am till 3am.
See you there!



CADDYSHACK BAR
LIVE SPORTS • SNACKS



BEST PLACE TO HAVE YOUR BREAKFAST

In front of Dom Pedro Hotel | Open everyday from 10am till 2am

SKY SPORTS





VILAMOURA PORTUGAL

BUS

Vilamoura is on a route running east to west across The Algarve. Timetables can be downloaded from www.eva-bus.com or call (00351) 289389143. Bus stops are dotted around Vilamoura; a good place to head for is just in front of Patacas (MAP 25). There is also a small ticket office next to the Jaffers supermarket.

TAXI

There are two taxi ranks in Vilamoura. The locations are marked by a Taxi symbol on the map at the rear of the guide. Alternatively you can call (00351) 289 300 160 to book one. The operators generally speak English. August is very busy and you can often wait for an hour for a taxi at the ranks so plan in advance where possible.

LINHA VERDE

“The Green Line” is a circular bus route encompassing Quarteira and Vilamoura and offers a convenient way to get around. www.LCglobal.pt/pt/ Click the Green Bus logo for information. Tickets are purchased from the driver approx €0.75/person

WALKERS GUIDE

Vilamoura covers 20km² and walking is a great way to get from place to place. Setting off from the Tivoli Hotel on the Marina it takes approximately:

- 20 Minutes to The Old Village
- 25 Minutes to The Hilton Hotel
- 15 Minutes to Falesia Beach
- 30 Minutes to The Tivoli Victoria
- 10 Minutes to The Police Station
- 40 Minutes to the EN125



THE PUBLIC BIKES

Vilamoura has both a mild climate and a flat landscape so it is the ideal place to use bicycles for travelling around.

The public bikes, fondly referred to as the “White Bikes”, are now in their third year and have been a welcome addition to Vilamoura. The shared bike system offers pollution free convenience and reduces traffic, not to mention the obvious health benefits in encouraging people to be more active. The bicycles are designed exclusively for Vilamoura and are manufactured using materials of the highest quality and safety standards. They were specifically made for ease of handling and convenience.

The network covers the whole of Vilamoura, both its business/tourist and residential areas, and the system is designed to allow users to rent bicycles and return them to any station, therefore avoiding the need to go to a central point to collect or return them. There are over 35 stations spread across Vilamoura with over 200 bikes available.

The Public Bikes, operated by Inframoura, are currently available only to property owners and customers of Inframoura. Some hotel receptions may also have cards available for you to use. For more information visit the Inframoura office next to the Police station.

Recommendations for Vilamoura.

Enjoy City Tour of Vilamoura by Touristic Train.

Timetable

10H	11H	12H	13H
15H	16H	17H	18H
20H	21H	22H	23H

Time: 45min
Stop: Vilamoura Beach
 (near the Hotel Vilagalé)

follow us on Facebook
www.facebook.com/delgaturis

Av. Tivoli, Edifício Europa n.º 5
 8125-401 Vilamoura - Portugal
 Tel./Fax: +351 289 389 067
 Telem. +351 967 709 400

d delgaturis
 Empreendimentos Turísticos, Lda.

2
 MAP



ON YOUR DOORSTEP

Vilamoura offers everything you need for the perfect holiday. With beaches, golf, the marina and a whole host of activities to keep you busy you may not feel a need to venture

out of town.

There are however a wonderful array of destinations on your doorstep, should you wish to spend a day or two out and about.



TO THE NORTH ALTE

Alte is a delightful village located about 25 minutes inland from Vilamoura. It is a typical Algarvian village with picture postcard whitewashed houses dotted along narrow cobbled streets. Alte is a town built around wonderful natural springs and is a great picnic destination. Alte is a popular stop with locals and tourist alike. The summer months can be quite busy because along with the waterfall and general beauty of the area there is also a swimming hole in which to cool off.

TO THE WEST OLHOS D'ÁGUA

Olhos d'Água is a small fishing village located between Vilamoura and Albufeira. It is generally quiet and peaceful compared to its neighbours but does get busy in the summer months. In terms of things to do, Olhos d'Água is all about relaxation. The beautiful white sand beaches with Umbrella Pines lining the cliff tops provide a dramatic backdrop to while away the afternoon. It is a nice walk from Vilamoura along Falésia beach at low tide but don't underestimate the distance.



Waves
SCOOTER RENTALS



+351 910 109 089

www.wavesscooters.com

TO THE EAST THE GOLDEN TRIANGLE

This covers the three points of Almancil, Quinta do Lago and Vale do Lobo. The area is very affluent and offers an abundance of luxury resorts and developments set amongst some of the finest golf courses and beaches in Portugal.

Almancil is more the shopping and commercial point of the Triangle whilst Vale do Lobo and Quinta do Lago have been described as “some of the most exclusive resorts in Southern Europe”. The area is well worth a drive around and places such as Breeze down on the beach in Vale do Lobo offer great dining options with stunning views and a relaxed atmosphere. Quinta Shopping is also a good stopping point with a comprehensive array of boutique shops.

AIRPORT, GOLF & EXECUTIVE

TRANSFERS

ON TIME - EVERY TIME

TRAVEL
Line

RNAV T. N.º 2200

+351 289 823 100
info@travelline.pt

WWW.TRAVELLINE.PT





VILAMOURA THE GOLFERS CHOICE



**VILAMOURA
GOLF BREAKS
CONTINUE TO ATTRACT
GOLFERS FROM
ALL CORNERS
OF THE GLOBE!**

Situated in the very heart of the Algarve, Vilamoura is uniquely placed as a destination for golf breaks. The proximity to Faro airport is a plus, with many European cities able to boast door to door in around 4-5 hours.

Another huge advantage is that when you arrive in Vilamoura you have everything you need right here on your doorstep. Within a compact 20km² area you have 6 world class courses, and many more within a short drive.

The Oceanico Old Course in Vilamoura was voted best golf course in Portugal 2014 and is a favourite to retain the crown in 2015.

Oceânico Victoria will also be the proud host of the Portugal Masters once again in 2015 further cementing its reputation as one of the finest golf courses in the Algarve.

There are few places that can match what Vilamoura has to offer. Golfers are always well catered for and given the plethora of bars and restaurants we can guarantee you will be adequately “watered and fed”!

4travel golf

The Best **4** your Holidays
Save Time and Money

Golf Bookings

Always at the best price available

 **18 holes rates**

 **2 + 1 Buggy**

 **Twilights**



Early Birds



Easter Specials



Summer Specials



Golf Packages

PLAY & STAY PACKAGES

SPECIAL GOLF OFFERS

CLUB HIRE

GOLF & TICKET SHOP

Information Center & Ticket Shop

Boat trips

Excursions

Jeep Safari

Sky Diving

Aquaparks

Etc...

**GROUP
OFFERS**

Address

Avenida da Marina

8125-401 Vilamoura

(in front of Vila Galé Hotel)

+351 289 321 253

bookings@travel4golf.pt

www.travel4golf.pt



THE FAMOUS FIVE

**VILAMOURA IS
PROUD TO HOST FIVE
WONDERFUL GOLF COURSES
AND WE ALSO HAVE THE
OUTSTANDING VILA SOL
ON OUR DOORSTEP.**



OLD COURSE

Opened in 1969 and completely renovated some 27 years later, this is the “Grande Dame” of Algarve courses. The Old Course meanders through impressive pine trees over gently undulating natural terrain, the pine trees offering the principal hazard. The addition of the new clubhouse and putting green only increased the attraction of this favourite Vilamoura course.



LAGUNA

Unlike the other Vilamoura courses, Laguna is located on relatively flat and open terrain. The strategic placement of bunkers and water hazards demand high accuracy of play. The child of American designer Joseph Lee, the first 9 holes were inaugurated in 1990, the back 9 were ready for play in 1993.



PINHAL

Inaugurated in 1976 and designed by Frank Pennink, the architect of the nearby “Vilamoura Old Course”. The course has had several refinements over the years. It is typified by the “Umbrella and Atlantic Pines” that line many of the fairways. Ponds and a stream come into play on five holes but are not serious threats to the above average golfer.



MILLENNIUM

This conventional Par-72 course opened in the year 2000. Millennium is one of the most beautiful courses ever built in Portugal. Boasting excellent integration into the natural surroundings with sympathetic and well thought out landscaping, the care taken in designing this great course is very evident.



VICTORIA

Victoria Clube de Golfe is the most ambitious golf project in Portugal. Victoria aims to be one of the finest courses in Europe and is not far away thanks to famed architect Arnold Palmer. The manmade lakes provide hazards and also reservoirs for irrigation illustrating the innovative design. The current home of the Portugal masters, Victoria is a must play course for any visitor.

Waves
GOLF BOOKING

Exclusive Packages
on the Algarve's
Premium Golf Courses

www.wavesgolf.com

Waves
HOLIDAY RENTALS

+351 910 109 089

www.wavesholidayrentals.com



FEATURE GOLF COURSE **VILA SOL GOLF**

Internationally known, the Vila Sol golf course managed by the Pestana Group, is now part of the Algarve's most sought after golf courses. Having been inaugurated in 1991 with the signature of the architect Donald Steel, "Vila Sol, is living proof that dreams can be realized".

Located in the Central Algarve the Vila Sol Hotel and Golf resort is set in 75 acres of natural beauty and accommodates these two magnificent golf courses, PestanaVila Sol Championship and Pestana Vila Sol Academy Golf Course.





Vila Sol

PESTANA GOLF RESORT



CHAMPIONSHIP GOLF COURSE

18 holes

Currently with start point at tee one, the course is planned to give all visitors who come to play at Vila Sol Golf in the Algarve a course where the preservation of the natural environment is sharply in mind.

The scenario consists of a pine, almond and fig trees, plants, flowers, lakes and streams, which all add to the pleasure and challenge of completing 72 strokes at this championship golf course, making the experience unforgettable from first to last shot.

PESTANA VILLAGE SOL ACADEMY GOLF COURSE

9 holes

For groups of professionals or for those who want a faster start and short game, this golf course gives the opportunity for a major golf training session which also encompasses a driving range of 300 meters, two putting greens, with chip areas, bunkers, and 9 holes tee shots. The 9 hole golf Academy course covers the 19th to 27th and allows classes to be customized, with a golf course of excellence, a fantastic layout and a unique natural environment.



TO HIRE OR NOT TO HIRE?

You doubtless spent a great deal of time selecting your clubs before you purchased them so your attachment to them is natural.

However...

The trend is definitely shifting as the quality of equipment for hire in Vilamoura improves. More and more people are choosing to hire clubs on arrival, or pre-book them. With brands such as PING, Titleist, Mizuno and Taylor Made available you are sure to find a set to suit you.



Airlines vary, but on average it will cost you €120 to get your clubs to Portugal and back. This is not to mention the added time at the airport, and the additional transport costs. By contrast, club hire is between €45 and €60 for a week's use so is well worth considering.

As long as you don't plan on wrapping your 9 iron around a tree, then the benefits are clear for everyone!

Algarve Club Hire .com

Complete Sets from **55€** a week



* Within 25km from Vilamoura

+351 96 755 21 95

book@algarveclubhire.com

www.algarveclubhire.com



WE STRIVE FOR PERFECTION AND ONLY DELIVER THE BEST!

GRASSHOPPER GREENS



NO 1 ON THE ALGARVE FOR SYNTHETIC GRASS SOLUTIONS

Putting Greens • Lawns • Tennis Courts
Football Pitches • Playing Areas
Roof Terraces • Leisure & Sporting Areas

Mobile: (+351) 910 365 071

Office Tel/Fax: (+351) 289 093 387

info@grasshoppergreens.com

www.grasshoppergreens.com



Family Golf Park^o
vilamoura

MINIGOLF • SNACK BAR • TURISTIC TRAIN • KIDS CLUB

Tel: 289 300 800 www.familygolfpark.pt



Family Golf Park

vilamoura

A MEETING POINT FOR ALL FAMILY... COME VISIT US!

If you spend your vacations with your family in Vilamoura, but have never been to Family Golf Park, you don't know what you're missing!

Right in the centre of Vilamoura, this Park has everything to have a great day!

Do you remember the last time you played mini-golf? In Family Golf Park you have two 18 holecourses for children and adults. Enjoy a good time in a beautiful green area, where you can travel back to Roman Times trough the many Ancient Roman Monument replicas you find along the courses.

But minigolf is just a starting point for a wellspent day!

We are open every day, so why not go exploring Vilamoura aboard the sight-seeing train? It's a fun activity for the whole family! You can also leave your kids in the children's area or in the fun zone, while you relax sitting in the Snack Bar's terrace and tasting one of our delicious ice-creams, our tasty Sandwiches or Hamburgers.

During July, at night, we have several free workshops running at the Park like the Arts Office Event, and in August we have the Thematic Nights where you can have so much fun with cartooning, face painting, Capoeira demonstrations or listening to live saxophone.



VILAMOURA BEACHES

Vilamoura has two stunning beaches each with their own distinct personality. The choice for your beach days is simple, East or West?



PRAIA DA ROCHA BAIXINHA

Falésia Beach is located to the West of the Marina entrance, Falésia presents you with a stunning stretch of white sand beach spreading over 3km from Vilamoura towards Olhos d'Água.

With sandstone cliffs as a wonderful backdrop it makes for a great beach day experience. The size of the beach means that even in the summer months you can find some space to relax and enjoy the sand between your toes. Falésia has a large paying, and free, car park close by so if you are travelling into Vilamoura is the easier option. Falésia also has several beach bars and clubs, including the famous Thai Beach Club. It also has showers and toilet facilities. (also seasonal) Both beaches have life guards on duty during the summer months and offer sun loungers for hire.

PRAIA DA MARINA

Vilamoura Beach is conveniently situated just behind the casino and stretches across towards the Tivoli Marina Hotel. Being the smaller of the two beaches, it is the first to fill up during the busy summer months. It offers a selection of water sports and beach bars for you to enjoy including "Retiro na Praia" - a "gem of a restaurant on the sand". These are seasonal and many close from mid-September through to spring time.





Waves

LUXURY BOAT CHARTERS

All cruises include:

- Unlimited wine, beer, soft drinks
- Fresh fruit platter
- Light snacks

On board for your pleasure:

- SEADOO Seascoters
- Snorkeling equipment
- Inflatable RIB for exploring the sea caves

Optional Upgrades

- Champagne package
- Aerial drone photography
- Adrenalin upgrade, water ski, wake board, banana boat

+351 910 109 089

www.wavescharters.com

Cruises:

Morning	€949
Afternoon	€1049
Sunset	€600
All day	€1969





ALGARVE SEAFARIS



GLASS BOTTOM BOAT

A unique opportunity to discover the world beneath the waves and open your eyes to the wonders of the ocean. The Glass Bottom Boat (auxiliary boat) is a huge hit with tourists of all ages. (Catamaran cruise including glass bottom boat tour and the dolphin route only €27 or including BBQ lunch aboard 34€).

10% discount
on online bookings



GROTTOE EXPERIENCE

The Algarve coastline is stunning and the only way to truly appreciate it is from the sea. The “Grottoes Experience” gets you “closer than close”, we actually take you inside the caves! The Grottoes Experience is one thing that is a must for your holiday, the picture opportunities alone are priceless. (Grottoe tour with lunch on the beach and the dolphin route €39)

10% discount
on online bookings



PRIVATE CHARTER

Bespoke option to build your own trip. The private charter option gives you control of the day so why not work with us to create the perfect holiday memories? We can tailor the hours to suit you and can prepare the boat with a whole host of extras from sea kayaks, snorkels, wetsuits and fishing gear to name a few. We can visit the caves, or search for dolphins? It really is up to you. Stag, Hen and Golf group specialists.

Email ivo.martins@algarve-seafaris.com

For more information on reef fishing and other options:

info@algarve-seafaris.com - www.algarve-seafaris.com



EXTREME FISHING

Whatever your choice, we have it all! Shark, Reef or Marlin, name your poison and join us for a great day out. Years of experience and the best skippers in town give us the edge. The results are great “hit rates” and the chance to catch a dream. Private or group options available. (Shark Fishing only €50)

10% discount
on online bookings



BIG GAME FISHING

The Algarve offers some unique fishing opportunities and it is well worth planning a day at sea into your holiday.

Dorado, Swordfish, Scalloped Hammerheads, Bluefin Tuna, are all a possibility, not to mention one of the best kept secrets of the Algarve, White and Blue Marlin. For a short period of time every year the warm waters of the Gulf Stream bring with them the opportunity to catch some of the most majestic and prestigious fish the oceans have to offer. The Blue Marlin, the ‘king’ of the big game, can weigh in at up to 500kg and is the absolute dream fish for the serious angler. Blue Marlin is an elusive fish that generally can be sought several miles off shore in the deep blue waters.

Thankfully most companies here now strictly follow a “catch and release” policy to help preserve these wonderful creatures. An alternative to big game fishing is reef fishing, with half day trips available and high catch rates it can offer an exciting afternoon out, good for families or for groups.



THE VILAMOURA MARINA

Vilamoura was the first Marina to be built in Portugal with approval granted in 1970. Eric Lyons and Ivor Cunningham from the UK won the bid for their design and construction began. The Marina was ready for use at a turbulent time in Portugal's history following the April 25th revolution in 1974.

The Original Marina had mooring for 1000 boats; today it has 825 berths due to some of the original smaller berths being adapted to handle larger vessels. Berths are supplied with fresh water, electricity, internet access and daily refuse collection.

The Marina provides toilet facilities, shower blocks and even has three laundries available for berth owners.

If you are considering buying a boat, then it's a good idea to visit the marina reception (near to falesia beach) where you can get information about costs involved in keeping a boat here or you can email us here at info@waves.pt and we will try to assist.

**BEST
INTERNATIONAL
MARINA**

of the year 2015

The Yacht Harbour
Association





CIDADE LACUSTRE

Vilamoura already offers a unique and vibrant environment for tourists and locals alike and yet the best is still to come.

April 2014 saw government approval granted for the Lake City Project. The project is a huge undertaking that will see the areas behind the current Marina developed into a series of navigable lakes and canals encompassed by pedestrian walkways.



New residential areas boasting contemporary architecture will occupy 188.500 m² of the development. Lake front properties will even feature private decks with swimming pools for the ultimate luxury.

The focal point will be the large central square providing an area of 14.000 m² for commercial space boasting shops, restaurants and leisure facilities.

The project will see Vilamoura firmly establish itself as the premiere resort location in Europe. Watch this space!

www.lusort.com for more information.





HEALTH & WELLBEING

Vilamoura is simply the perfect place to improve your health and quality of life. It's the place where there are no longer any excuses to put off getting in shape. The obvious motivator is the weather which encourages even the most stubborn couch potato to get up and go for a stroll, but we also have an amazing array of facilities right here on our doorstep.

Vilamoura is a hugely popular winter training ground with northern European countries in particular. We see a wide variety of sports people here including running clubs, football teams, cycling teams, and many professional, even national, rugby teams.

Cycling, jogging and walking are excellent ways to explore Vilamoura. On your journey you will also discover a series of exercise stations that have been provided with guidelines on how to use them. Some of the

stations also have water fountains to top up the tank on those warmer summer days. Vilamoura continues to promote health and wellbeing through a comprehensive calendar of events each year, the newest event being the "Eco-Marathon" which was held at the beginning of March 2015. The Eco-Marathon offered a series of events the main ones being the 10km run and the 21km half marathon. With over 1000 participants at the inaugural event we are sure to see this become an annual fixture and grow year on year.

Let's not forget that in addition to the above, we have a fantastic tennis academy, equestrian centre, swimming facilities, golf and the world class 7spa to wind down after it all.

For more information on upcoming events just pop into the Inframoura office. (see map)



CERRO DA VILA

Vilamoura as a resort may be relatively young but the area has been of some importance for centuries. Evidence of this can be seen at Cerro Da Vila, an archaeological site in the heart of Vilamoura dating back to Roman times.



The site is well worth a visit with remains of a Roman villa, bath houses, fish salting tanks, a port area and the foundations of a funeral tower. Situated just 100 metres from the Marina, it can be a peaceful escape in the busy summer months.

Opening times: 9.30am-12.30am & 2pm-6pm
Entrance: €3 | **Open all year**

DC photography

one eye sees...
the other feels...

When passion meets art - DCPhotography
Commercial, lifestyle, family & special events.

dcphtographyalgarve@gmail.com
 (+351) 919 105 372

Perfectly Polished
 hairdresser & beauty cabeleireiro & estética

MARINA DE VILAMOURA

Hair / Nails / Make-Up / Waxing
 Massage / Eye Treatments / Facial
 Cabelo / Unhas / Maquilhagem / Depilação
 Massagem / Olhos / Limpeza de Pele

Tel +351 289 301 079
 E-mail perfectlypolished2014@gmail.com



THE OLD VILLAGE

The Old Village is an Idyllic location for a peaceful getaway from it all. Popular as a holiday destination with couples and families for many years, the quaint cobbled pathways lead you through a colourful maze of townhouses, restaurants and bars.

The Village is pretty much self contained boasting a mini supermarket and is a stopping point on both of Vilamoura's tourist trains, adding to the convenience.

People visiting the area generally return year after year, a positive testament to Vilamoura's most colourful corner.

If you are staying in the Marina then why not take the tourist train and go exploring the area for yourself.

Return on the train or enjoy the walk, its downhill on the way back and about 20 minutes on foot to the Tivoli Marina hotel.





Recommendations for Vilamoura.

Village 4u Lettings

- Long and short term touristic rental services within high quality individually furnished properties
- Full property management service
- Marketing of your property for rental which includes photographic services
- Arrangement of property refurbishment
- Access to golf, theme parks, tours & trips
- Transfers & Rent A Car

Tel/Fax: +351 289 312 016

Mob.: +351 9277 13609

E-Mail: enquiries@villagelettings.eu

www.villagelettings.eu



 **sap**
Since 1991 villas

Holiday Rentals

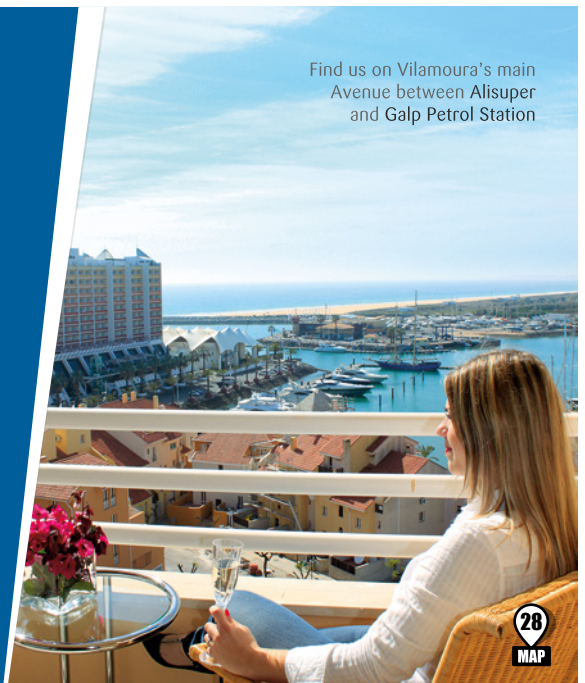
& Property Management

+351 289 302 169

+351 919 535 951

info@sapvilamoura.com

www.sapvilamoura.com



Find us on Vilamoura's main Avenue between Alisuper and Galp Petrol Station





24 HOURS OF FOOD & DRINK

Vilamoura has so much to offer we could fill hundreds of pages in every edition! We simply don't have that ability yet, so in every edition we will try to bring you a few ideas and suggestions based on feedback we receive.

Twenty four hours of food and drink in Vilamoura would have to begin with a good breakfast. English and Irish breakfasts are plentiful and a short walk around the marina will provide many choices. Recommended are The Caddyshack near to the Casino, Parky's bar on the Marina and also located at Parque das Amendoeiras.

You may need a little "pick me up" mid morning and Portugal certainly offers great coffee!

Urban Café on the west side of the marina is a good spot to try coffee Portuguese style. Lunch Menus in Portugal are great value reflecting the cultural habit of lunch time dining. Look for the "Prato do Dia" signs outside restaurants and cafes for the daily specials.

In the evening there are many choices. A well established favourite here on the Marina is Akvavit where you will find some of the finest quality foods in town. Alternatives are the 19th hole, The Brewery and O'neills offering traditional pub food.

If you are feeling more east than west Tako Sushi or My Thai, on the Marina, offer an authentic and tasty selection of Asian dishes from Teppanyaki to Sushi.



Recommendations for Vilamoura.



*“A Culinary Landmark on
Vilamoura Marina for 24 years”*

www.restauranteakvavit.com

For Reservations (00351) 289 380 712





SOMETHING FOR EVERYONE

Hidden Treasure

Patacas is a great “local” bar established in 1987 and located just behind the marina. This is a “must find” on day one of your stay. With a pool table, great staff, €2.00 happy hour pints until 8.30pm and the warmest of welcomes it would be rude not to!

Sports

Most bars in town show live sports and follow the major sporting events. Some good venues include the 19th hole, O’neills and the Hole In One all on the marina itself. The Brewery is the new bar in town also showing all games live.

Live Music

“The 19th Hole” on the Marina really rocks after 10.00pm with a mixture of Live Bands and Karaoke hosted by the infamous “Si Frater”. (morning show host on the Algarve’s “Kissfm”). Great ‘holiday memories’ guaranteed!

Family


Hamburger Heaven! Tuttapanna Hamburgueria offers an awesome selection of homemade burgers at very reasonable prices. You also can choose from a wide selection of original ice-creams. Not to be missed!



*Ristorante e
Sushi Fusion*

Tuttapanna
Vilamoura


For reservations call:
289 047 140 | 961 911 632 | 915 294 869

*Hamburgueria
e Gelateria*

Tuttapanna
ARTIGIANALE

For reservations call: 961 911 632





o' neills

v i l a m o u r a m a r i n a

the spirit of ireland

***FANTASTIC LIVE BANDS** every night

*the **BEST STAFF** in the Algarve

***Spacious OUTDOOR DECK & BAR**

***DELICIOUS NEW FOOD MENU** all day

" just real IRISH CRAIC & HOSPITALITY "

O'Neills is an independent, Irish-owned bar, Irish Bar and is quite simply, the most famous Irish Bar in Vilamoura.

Located on Vilamoura Marina, O'Neills offer the very BEST in Irish "CRAIC", hospitality and atmosphere with fantastic LIVE bands 7 nights a week, a delicious FOOD Menu served all day and a huge range of STOUT, BEERS, WINES and SPIRITS.

Known for their fantastic staff with the biggest welcome for all, O'Neills has become FAMOUS for their atmosphere during all major SPORTS events, including GAA, RUGBY, FOOTBALL, GOLF and many more.

A visit here is a must!

O'NEILLS BAR

Vilamoura Marina, Algarve

t: 00 351 289 388 566

facebook.com/oneillsbar

www.oneillsloungbar.com





THE RIGHT TIME TO BUY?

We currently have over 30 real estate offices in Vilamoura with yet more planned. The feeling is that this year will be very very good for the property market.

So what has changed?

Portugal, and the Algarve in particular, has always been popular with international buyers. We saw hesitation during 2011 - 2014 as the European financial crisis dominated headlines. Now it seems that the buyers are returning in numbers.

- Portugal has risen to the stiff economic challenges of the previous few years and is on track for 1 - 1.9% GDP growth for 2015.
- The Irish economy is much improved and in February the European Commission predicted a 3.5% increase in GDP for 2015, making it potentially the fastest growing of the 28 EU economies.
- The Pound is high, predictions vary for 2015, but on the whole UK buyers are much better off than in previous years. The drop in Portuguese property prices between 2011

A UNIQUE INVESTMENT PROPOSITION BY PRIVATE FUND MANAGEMENT

Private Fund Management's ethos is to offer the community a unique alternative to that offered by other financial firms. In short, they provide wealth & tax management services with the emphasis on proactive investment management.

Private Fund Management introduced their InvestClever Client Service last year and this service counteracts the many pitfalls investment portfolios experience.

InvestClever is a proactive investment service. For many years, investors have been

notified about investment problems after they have occurred. For example, poor performance of a fund, often notified twelve months later on an annual review." In layman's terms, shutting the stable door after the horse has bolted". Our service is the complete opposite as the portfolio is monitored on a daily basis and proactively managed.

This daily action can make a difference over time to client's returns by up to 20% over 5 years, based on actual historical performance.

Private Fund Management is an appointed representative of Abana, authorised and regulated in Portugal by the Instituto de Seguros de Portugal ("ISP") with registration number 412378472 and is authorised in the United Kingdom by the Financial Conduct Authority ("FCA") number 597069. The performance data quoted represents past performances and does not guarantee future results. The investment return and principal value of an investment will fluctuate; thus an investment, when sold or redeemed, may be worth more or less than their original cost.

and 2013 combined with the exchange rate increase this year means a potential real gain of up to 40% when buying today, in pounds.

• In the past couple of years we have seen a huge increase in French buyers, this is in part due to a very punishing tax regime at home and Portugal's rules on overseas pensions favoring retirement here.

We also have a host of other European and non-European buyers that choose Portugal as the place to be. It seems that if you have been considering taking the next step, then it is indeed true... **now is the right time to buy.**



- Quality apartments and villas
- Fully furnished and equipped
- Best locations, near the golf or the beach

ALGARVE | LISBON | SILVER COAST | NORTH



ALOJAMENTOS - HOLIDAY RENTALS DESDE 1983

T. 00351 289 381 551
 reservas@garvetur.pt
www.garvetur.pt

PRIVATE FUND
MANAGEMENT

INVEST
clever
CLIENT SERVICE

INTRODUCING
PRIVATE FUND MANAGEMENT'S
INVESTCLEVER CLIENT SERVICE

MAXIMISING YOUR INVESTMENTS
BY MONITORING YOUR PORTFOLIOS DAILY

FREE INITIAL CONSULTATIONS
CALL NOW FOR AN APPOINTMENT
+351 289 392 484

DISCREET WEALTH & TAX MANAGEMENT SERVICES
BASED IN ALMANCIL, COVERING THE WHOLE OF PORTUGAL

www.privatefund.management

Private Fund Management is an appointed representative of Aviva Life, is authorised and regulated by the Institute of Regulators in Portugal (IRFP) with registration number 012/2004/01 and is authorised by the Financial Conduct Authority (FCA) number 090080.

WE STRIVE FOR PERFECTION
AND ONLY DELIVER THE BEST!

GRASSHOPPER

**PAINTING &
DECORATING
SERVICES**

Promotional Offer
2T Apartment
Fully Painted From
Only €850 + IVA
(subject to viewing)

Mobile: (+351) 910 365 071
Office Tel/Fax: (+351) 289 093 387
info@grasshoppergreens.com



TOP 6 TIPS WHEN BUYING PROPERTY IN PORTUGAL

1. Use an INCI registered real estate agency.
2. Make sure your real estate agency really knows the areas you are interested in.
3. Use a lawyer that will give you documentation in English.
4. Do your own research on the current market situation to support the professional advice.

5. Understand the buying process from reservation to promissory contract to completion.
6. Outside the eurozone? Use a currency exchange company to save money.

bm Prestige
real estate experts

Exclusive Properties
bmprestigeproperties.com

30
MAP

FIND YOUR DREAM HOME

Sónia Lourenço
+351 912 415 174
sonia@bmprestigeproperties.com

30
MAP

REF.ALG-0042

EXCELLENT 2 BEDROOM TOWNHOUSE
Fonte Santa, Quarteira - 270.000€

Plot: 112m² | Const.: 109m²
Energy Class: C

2 Bedrooms
- Equipped kitchen, fitted wardrobes and spacious rooms
- Condominium with garden, swimming pool, playground and tennis court

www.bmprestigeproperties.com

AMI nº 8540
Avenida da Marina, Edf. Via Marina, Lt F1, Lj 8 Vilamoura
Sónia Lourenço
+351 912 415 174
sonia@bmprestigeproperties.com

3m Prestige

30
MAP

IPANEMA VILLAS
Vilamoura - P.O.A - Owner direct price

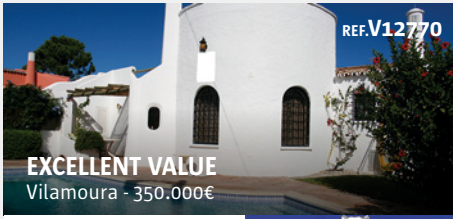
- Attached villa- single story
- 3 bedroom
- 2 bathroom
- Enclosed private courtyard
- BBQ area
- Fantastic communal pool area
- Great location near to Hilton Hotel

DIRECT FROM OWNER

Reduced to sell
with option to include furniture

David Scott
Tel.: (00351) 915 600 104
E-mail: davescott@live.com

30
MAP



REF.V12770

EXCELLENT VALUE
Vilamoura - 350.000€

Plot: 533m2
Construction: 133m2
Energy Class: E

3 Bedrooms
2 Bathrooms
Living Room & Kitchen
Swimming Pool & Garden



Licence nº 489
Cinema building, shop 3
(next to Spar supermarket)
Vilamoura
+351918 788 375/918 788 373
sales@vendavilla.com
www.vendavilla.com



REF.V12792

TYPICAL COUNTRY VILLA
Boliquiteime - 295.000€

Plot: 533m2
Construction: 133m2
Energy Class: E

3 Bedrooms
2 Bathrooms
Office, Living Room & Kitchen
Swimming Pool & Garden
Barbecue



Licence nº 489
Cinema building, shop 3
(next to Spar supermarket)
Vilamoura
+351918 788 375/918 788 373
sales@vendavilla.com
www.vendavilla.com



VICTORIA GARDENS

Vilamoura - P.O.A

DIRECT FROM OWNER

- Spacious 2 bedroom
- 3 bathroom
- Ground floor
- Wheelchair access
- Underground secure parking
- Entry system
- Stunning communal pool area
- High rental potential

Reduced to sell
with option to include furniture

David Scott
Tel.: (00351) 915 600 104
E-mail: davescott@live.com



TERRAÇOS DO PINHAL

Vilamoura - P.O.A

DIRECT FROM OWNER

- Ground floor 1 bedroom 1 bathroom
- Great views over Pinhal golf course
- Secure underground parking and storage
- Large communal pool and garden area
- Peaceful and secure condominium

Reduced to sell
with option to include furniture

David Scott
Tel.: (00351) 915 600 104
E-mail: davescott@live.com

Benfarras

N 125

N 125

Albufeira

Faro

TERRAÇOS DO PINHAL

Golf Academy

Browns Sports Club

Caminho dos Golfes

OCEÂNICO THE OLD COURSE



OCEÂNICO MILLENNIUM GOLF COURSE

TIVOLI VICTORIA

OCEÂNICO VICTORIA GOLF COURSE



OCEÂNICO LAGUNA GOLF COURSE



Avenida Vilamoura XXI

SPAR

Avenida Eng. João Meireles

21

THE HILTON

OCEÂNICO PINHAL



JAFFERS

FOUR SEASONS

12

The Old Village

Rua Nelson Jones

Rua do Sol

Estrada de Quarteira

Estrada de Quarteira

Rua do Sol

Avenida Tivoli

Av. da Amizade

Av. da Amizade

Av. da Amizade

Av. da Amizade

Av. da Amizade

Av. da Amizade

Av. da Amizade

Av. da Amizade

Av. da Amizade

Av. da Amizade

VILAMOURA

CERRÓ DA VILA ROMAN RUINS

THE LAKE RESORT

MARINA DE VILAMOURA

Marina Reception

TIVOLI HOTEL

CASINO

PRAIA DA FALÉSIA

PRAIA DA MARINA



© Supermapa Lda. All rights reserved

0 250 500 m



www.waves.pt



VILAMOURA



0 50 100 150 m



PRAIA DA MARINA



WAVES GUIDE VOUCHERS

We have worked with businesses locally to bring you some great offers to further enhance your holiday. As with all offers, there is some small print so please read the

following guidelines to avoid disappointment. If you are unsure about anything then you can call (00351) 910109089 for English speaking assistance or email info@waves.pt.

All vouchers are only valid until 1st August 2015

The vouchers on these pages are **restricted to one per person** and can't be used in conjunction with any other offers.

The vouchers are only valid when presented with the **Waves Guide at the actual attraction**.

They are **not valid** in ticket shops, booking agencies, hotel receptions or other third parties.

Algarve SEAFARIS

Daily Cruises & Sport Fishing

10% discount + 1 free drink
Limited to 1 voucher p/person

+351 289 302 318
info@algarve-seafaris.com
www.algarve-seafaris.com

Algarve SEAFARIS

Daily Cruises & Sport Fishing

10% discount + 1 free drink
Limited to 1 voucher p/person

+351 289 302 318
info@algarve-seafaris.com
www.algarve-seafaris.com

Algarve SEAFARIS

Private Hire and Sunset Dj Boat Party

15% discount

+351 289 302 318
info@algarve-seafaris.com
www.algarve-seafaris.com

Waves
LUXURY BOAT CHARTERS

10% discount on Luxury Boat Charters

+351 910 109 089
info@waves.pt
www.wavescharters.com

4travelgolf

20% OFF Clubhire

+351 289 321 253
bookings@travel4golf.pt
www.travel4golf.pt

4travelgolf

15% OFF Golf Accessories

*minimum sale of 20€

+351 289 321 253
bookings@travel4golf.pt
www.travel4golf.pt




Vilamoura Bike Rentals
- 10% discount on 1h/4h
- 15% discount on 24h+
10% discount for Combis
limited to 1 voucher per person

29
MAP

CHECK CIRCLE IF USED

+351 289 316 059
vilamoura@bikeawish.com
www.bikeawish.com



15% discount
on Vilamoura's
Family Golf Park entries

4
MAP

CHECK CIRCLE IF USED

+351 289 300 800
info@familygolfpark.pt
www.familygolfpark.pt



Vilamoura's
Touristic Train
Buy 2 Trips
Get 1 Free

2
MAP

CHECK CIRCLE IF USED

+351 289 389 067
geral@delgaturis.com
www.delgaturis.com



Family Train
Get one all-day ticket
for the price of one way
1h circuit discovering Vilamoura

4
MAP

CHECK CIRCLE IF USED

+351 289 300 800
info@familygolfpark.pt
www.familygolfpark.pt



10% discount on
2 Individual Tickets
in 200cc or Junior.

25
MAP

CHECK CIRCLE IF USED

+351 289 399 899
info@kartingalgarve.com
www.kartingalgarve.com



20€ OFF
Tandem+DVD+Photos
* some age, weight and health restrictions apply

25
MAP

CHECK CIRCLE IF USED

+351 914 266 832 / 282 496 581
info@skydivealgarve.com
www.skydivealgarve.com



Waves Special
Cocktails!
Buy 1 (€6.50)
Get 1 Free!

25
MAP

CHECK CIRCLE IF USED

+351 289 314 247
patacasbar@gmail.com
www.patacasbar.com



10% OFF
Hair / Nails
Make-Up / Waxing

11
MAP

CHECK CIRCLE IF USED

+351 289 301 079
perfectlypolishedvilamoura@gmail.com
facebook.com/perfectlypolished.vilamoura



7Spa Experience
for €25 instead €35

21
MAP

CHECK CIRCLE IF USED

+351 289 320 950
recepcao7spa@7-spa.com
www.7-spa.com



Relaxing Aromatic
Massage (50min)
+ 7Spa Experience
for €65 instead €79.

21
MAP

CHECK CIRCLE IF USED

+351 289 320 950
recepcao7spa@7-spa.com
www.7-spa.com



VILAMOURA ESSENTIALS



International Dialing Codes:

Portugal	(00351)
UK	(0044)
Eire	(00353)
Germany	(0049)
France	(0033)
Netherlands	(0031)
Italy	(0039)
Spain	(0034)



Local Medical Centres

In case of emergency there is an accident and emergency hospital in Loulé or call 112 for an ambulance. In other cases, such as requiring a GP, then stop by one of the medical centres in vilamoura.

Staff generally speak english and are always very helpful.

There are two main centres highlighted on the map:

Clínica Particular (near to the police station) Tel.: 707 28 28 28

Clínica Internacional de Vilamoura

(near the casino) Tel.: +351 289 31 42 43 or +351 963 852 153



MARKETS & EXCURSIONS

Local Markets are held in Quarteira every Wednesday, and in Loulé every Saturday.

A wide variety of excursions are available from Vilamoura. Bus trips for local markets and traditional villages are available.

Trips further afield also depart from Vilamoura, including destinations such as Gibraltar, Seville and Lisbon.

Bookings can be made at travel4golf (MAP 06)

USEFUL CONTACTS INFORMATION

WIFI is widely available in coffee shops and bars throughout Vilamoura.

IN CASE OF EMERGENCY

Call 112

(POLICE, FIRE, AMBULANCE)

Taxi

+351 289 300 160

Train Station (Loulé)

808 208 208

Marina Reception

+351 289 310 560

Tourism Office (Quarteira)

+351 289 389 209

Faro Airport

+351 289 800 800

Police (Vilamoura)

+351 289 381 780

Bus Station (Quarteira)

+351 289 389 143

UK Consulate Portimão

+351 808 203 537
+21 395 40 82

Irish Embassy Lisbon

+351 213 308 200

Post Office Vilamoura

+351 289 323 561

Printing Boarding Passes

Travel4Golf Office

**I AM NOT AS EXPENSIVE
AS YOU THINK.
FOR ADVERTISING RATES
INFO@WAVES.PT**

The Brewery

A warm welcome guaranteed at

Vilamoura's newest and best Irish Pub!

- The best place to watch sports with wide screen TV's throughout
- Premiership Football, Rugby, Golf, GAA shown live.
- Traditional "Pub Menu"
- Great Guinness guaranteed
- Live Bands

"The clever design of The Brewery has created a perfectly balanced pub environment. Front-row marina seating on the spacious outside deck combines with a cool, yet cosy, interior that creates a "Cavern" style feeling. Perfect for when the live bands kick off later in the evening... Simply the best place to while away the hours."

SKY SPORTS

www.thebrewery.pt



MAP

Best Happy Hour in Vilamoura
5 till 8pm = €2 for a large beer



Pub sports: Pool Table, Table Football, Darts, Quiz,
SKY Sports, SPORTTV, Drinks, Cocktails and Snacks



A Vilamoura landmark for over 25 years!

Come and see for yourself! Open 5pm till 4am everyday. See MAP25

www.patacasbar.com - facebook.com/patacasbarvilamoura

THE AFTER DINNER PARTY



Korpus
Gentlemen's club

**THE PREMIUM CLUB
IN VILAMOURA**

Open every night from 10:30 till late !

Information: +351 967 575 951

Rua Centro Tivoli - Edifício Tália - Vilamoura
(For location, please check the map inside)



www.clubkorpus.com
stripkorpus@sapo.pt